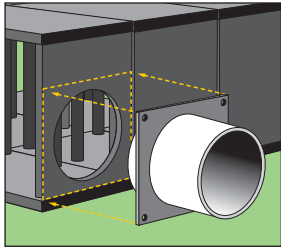


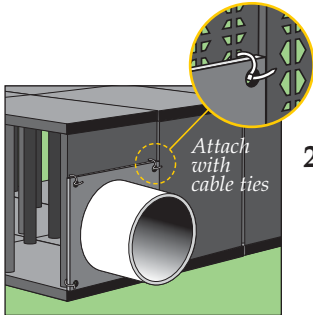
INLET/OUTLET CONNECTORS



TO INSTALL:

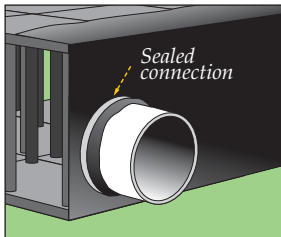
1) Cut Hole in Side Panel

Using a hole saw or jigsaw, cut a hole in the StormTank Side Panel in the same diameter as the inlet/outlet connector pipe. Before cutting, make sure the center of the proposed hole is located at the correct elevation and that the flange plate of the connector does not extend beyond the side panel edges.



2) Attach Connector to Side Panel

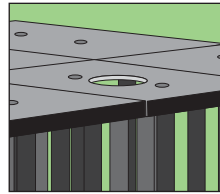
Attach the connector to the side panel using cable ties through the holes in the corners of the flange plate. Make sure the longer length of the inlet/outlet connector pipe is on the outside of the StormTank system to allow for joining the drain pipe.



3) Cover with Geotextile and/or Liner

Cover the connector flange plate with geotextile and/or liner material and seal with banding or water-resistant tape.

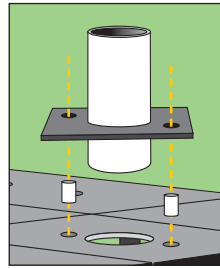
OBSERVATION PORT



TO INSTALL:

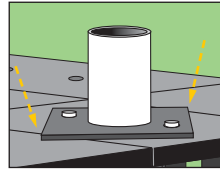
1) Cut Hole in Top Panel

Using a hole saw or jigsaw, cut a hole in the center of the StormTank Module Top Panel in the same diameter as the observation port pipe.



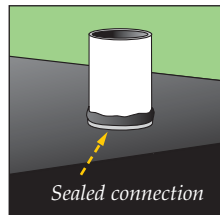
2) Align Port Plate with Top Panel

Insert two StormTank Vertical Connectors into the circular recesses of the top panel of the StormTank module and align the port plate using the matching holes in the plate. Make sure that the plate is positioned so that the corners of the plate extend across the two adjoining modules.

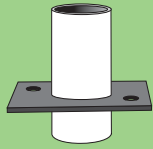
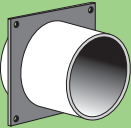


3) Cover with Geotextile and/or Liner

Cover the port plate with geotextile and/or liner material and seal with banding or water-resistant tape.



CONNECTION ACCESSORIES DIMENSIONS

OBSERVATION PORTS				
	PIPE DIAMETER	PIPE LENGTH	PLATE DIMENSIONS	PLATE THICKNESS
	4" (102 mm)	11.25" (286 mm)	18" x 18" (457 mm x 457 mm)	0.50" (13 mm)
	6" (152 mm)	11.25" (286 mm)	18" x 18" (457 mm x 457 mm)	0.50" (13 mm)
INLET/OUTLET CONNECTORS				
	12" (305 mm)	11.25" (286 mm)	18" x 18" (457 mm x 457 mm)	0.25" (6 mm)
	14" (356 mm)	11.25" (286 mm)	18" x 18" (457 mm x 457 mm)	0.25" (6 mm)



Brentwood Industries, Inc.
 Mailing Address P.O. Box 605, Reading, PA 19603, USA
 Shipping Address 610 Morgantown Rd., Reading, PA 19611
 Phone 610.236.1100 Fax 610.736.1280
 Email wwsales@brentw.com
 Website www.BrentwoodProcess.com